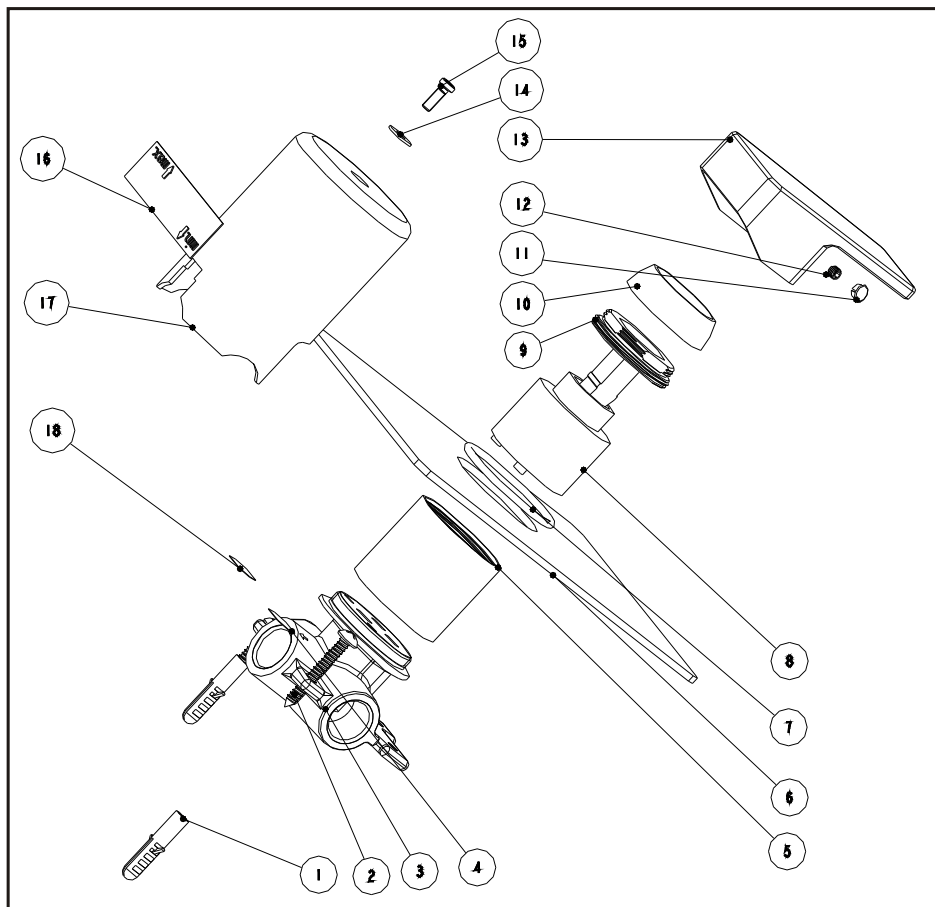


Concealed shower mixer

Installation Instruction

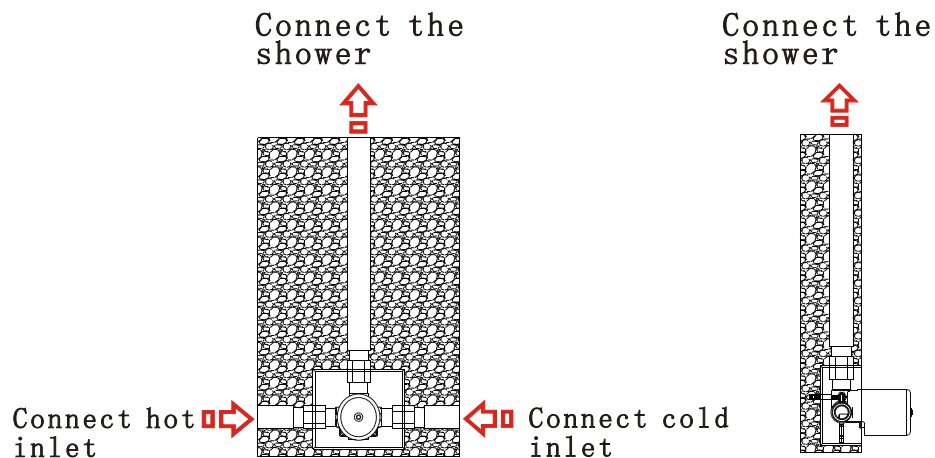
Please read this instruction carefully to avoid any difficulty during installation.



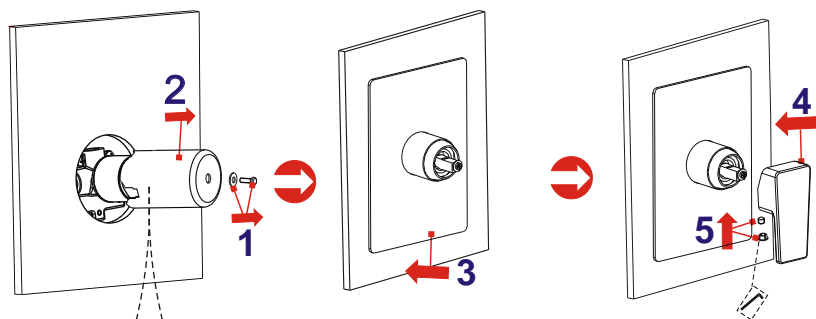
Components List

No.	Component	Quantity
1	Plastic sleeve	2
2	Cross-head screw	2
3	Main body	1
4	Red index	1
5	Cover	1
6	Plate	1
7	Sealing strip	1
8	Ceramic cartridge	1
9	Cartridge fastener	1
10	Cap	1
11	Plug	1
12	Female allen screw	1
13	Handle	1
14	Flat washer	1
15	Cross-head screw	1
16	Index	1
17	Safe cover	1
18	Blue index	1

Installation Step



1



After installing the main body, read the index on cover, install the decorating tiles and glue the plate (3).

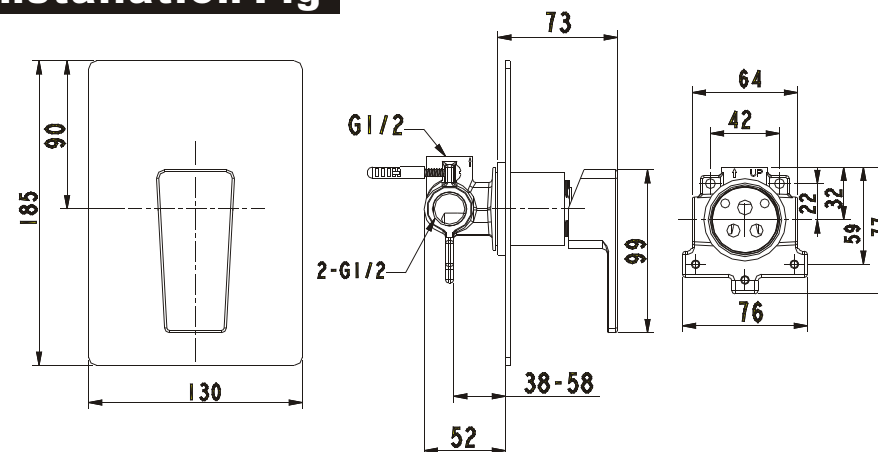
2

* Read the Installation Fig and confirm the installing position.

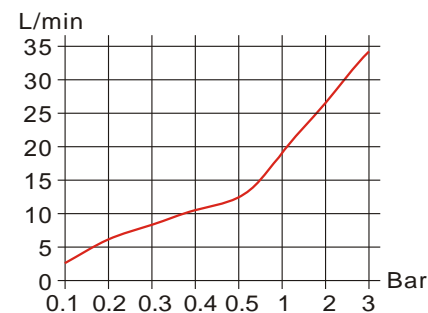
** Test:

Open the supply pipes, close the ceramic cartridge and check the connections for leakage; open the ceramic cartridge and check the smooth water flow. Decorate the wall after checking and remove the safe cover. Install the escutcheon and handle.

Installation Fig



Flow rate Curves



Test pressure: 1.6MPa (16bar)

Flow pressure:

Min 0.05MPa

Max 1.60MPa

Recommended pressure:

0.1MPa to 0.8MPa (1 to 8 bar)

Note

1. Ensure proper cleaning of the water supply pipe before installation to avoid any jammed
2. The cold-water supply must be connected on the right and the hot-water supply must be connected to the left.
3. Check the installation dimensions according to the Figure and ensure it is installed correctly.
4. Hot-water inlet temperature must not be over 80°C.